

## ***Introduction***

The Marlborough Civic Theatre Trust Board Inc owns and operates:

- Ticket Direct Tasman
- Marlborough Light & Sound

The Marlborough Civic Theatre is a multi-use theatre providing facilities for local and visiting performing groups, music and dance recitals etc. It has a capacity to seat 461 in a standard theatre seating format. The Marlborough Civic Theatre can be located on Arthur St Blenheim

The Trust also owns and operates two theatre related businesses: a ticketing franchise under the TicketDirect brand and Marlborough Light & Sound, which is an offsite hire company that does everything from sound to lighting to event management.



### **STAFF**

The Marlborough Civic Theatre has 3 fulltime backstage staff.

- 1 X Operations Manager (Event & Stage Management) – Alana Cairns - 021849953
- 1 X Sound Technician (Flying, Rigging & Sound Design) – Mark Templeton - 021849878
- 1 X Lighting Technician (AV& Lighting Design) – Jeremy Falconer – 0274246503

Email Address  
operations@mctt.co.nz

The backstage staff at MCTT is more than willing to help you with all your show requirements. We aim to make our users time with us a happy stress free event. You can help us to help you by the following:

- Please send full and detailed Tech Riders 1 month prior to your event
- Any changes can be made to the stage area but the Theatre must be left as you found it.
- Return the Technical Agreement 21 days prior to your pack in.

Please contact us if you have any questions.

## 2. Technical Information

### Back Stage

#### Dimensions:

Proscenium height:	6 m
Proscenium width:	12.9 m
Stage depth:	10 m
Overall stage width:	19.2 m
Grid height	7 m

#### Suspension System:

The theatre has 8 Hemp flying lines. (**Please note:** Top of Proscenium to Grid = 1m) There are also 5 winched LX bars. Hemp flying bridge/gallery situated stage right approximately 3.6m above the stage floor. Lx winch gallery is situated stage left approximately 5m above stage.

Height - Stage floor to underside of grid - 7 m  
- Grid to roof - 1.5 - 2 m

- Please contact Operations Manager regarding positions of Hemp lines

#### Stage Access:

Via the car park at the rear of the theatre are two large doors (Width 2.9m x Height 2.8m) allowing access at stage level. It is possible for smaller units i.e. 3 - 5 ton vehicles to be backed into the rear of the theatre, larger units can be backed to the doors.

#### Stage Draperies:

Proscenium Border and Travelling curtain	(Burgundy)
4 Black Borders	
4 Sets of Legs	(Black)
2 Black travelling Tabs	1 at centre stage 1 at back of stage
1 full sized Cyclorama	(White)

**The 4 sets of legs can be moved or removed but must be replaced to there original position before you leave the Theatre.**

#### Communication System:

Technical areas are served by a ring intercom, with a total of 11 outlets positioned around the theatre. There are 7 headset and belt units that can be connected at any of these points.

#### Support Facilities:

##### Dressing Rooms

2 rooms each seating 12- 15 people. **This number is not to be exceeded.** There is a shower and 4 toilets for the dressing rooms.

##### Orchestra pit

Total area is 36 sq m. There is a pit cover that is manually removed and a hand rail system erected. The pit cover sits flush with the stage, effectively increasing the size of the stage area and apron. Performers can walk from the stage into the auditorium without any barriers when the pit covers are down.

## Lighting

It is important that all lighting requirements be advised at least **fourteen (14) days** in advance of the first day's hire.

Even no requirements should be advised.

Failure to advise us of your requirements could prejudice the availability of equipment and or staff.

As no two lighting requirements may be identical, any rig installed must be altered to suit each hirer. This may be simple or alternatively, complicated and time consuming.

We must know what you require.

### Auditorium

- 1 X Strand 520i lighting desk.
- 5 X on stage lighting bars.
- 1 X Advance bar
- 1 X FOH lighting bridge.
- 139 patch circuits to the control room.
- 156 Dimmers.

### Available Lighting Equipment

Manufacturer	Type	Power Output	Quantity	Other
Selecon	Pacific 12° -28°	1000W	12	
Selecon	Pacific 14° -35°	1000W	6	
Selecon	Zoomspot 18° - 34°	1200W	8	
Selecon	Zoomspot	1000W	8	
Selecon	Zoom	500W	2	
Selecon	Performer (Follow Spot)	1200W	2	
Selecon	Fresnel	SF 1200W	26	
Selecon	P.C.	1200W	20	
Selecon	Fresnel	SF 1000W	15	
Selecon	Fresnel	SF 500W	5	
Selecon	Fresnel	500W	6	
<b>Note: Not all Fresnels have barn doors.</b>				
Thomas	Par 64's	1000W CP62 Wide	30	
	Colour Punch	300W	12	
Teatro	Cyc Flood	1000W	16	
Selecon	Strobe		1	
Selecon	Effects Projector		1	
Black Lights	Fluorescent Tubes		6	
	Motorised Mirror Ball		1	
	LED Bars		4	
	Jem K1 Hazer		1	
	Jem ZR 33 Smoke Machine		1	

# Sound

It is important that all sound requirements be advised at least **fourteen (14) days** in advance of the first day's hire.

Even no requirements should be advised.

Failure to advice of requirements could prejudice the availability of equipment and or staff.

## **Auditorium in House P.A. System Includes:**

1 X Soundcraft 24 Channel Sound Desk  
1 X DBX Drive rack 260  
1 X Studiomaster 1200D  
1 X Yamaha P5000S  
2 X RCF Event 3000 (Left & Right)  
2 X Yamaha BR15 (Centre Fill)  
2 X EV SX80 (Delays)  
2 X Powered Foldback Wedges

## **Other Sound Equipment Available**

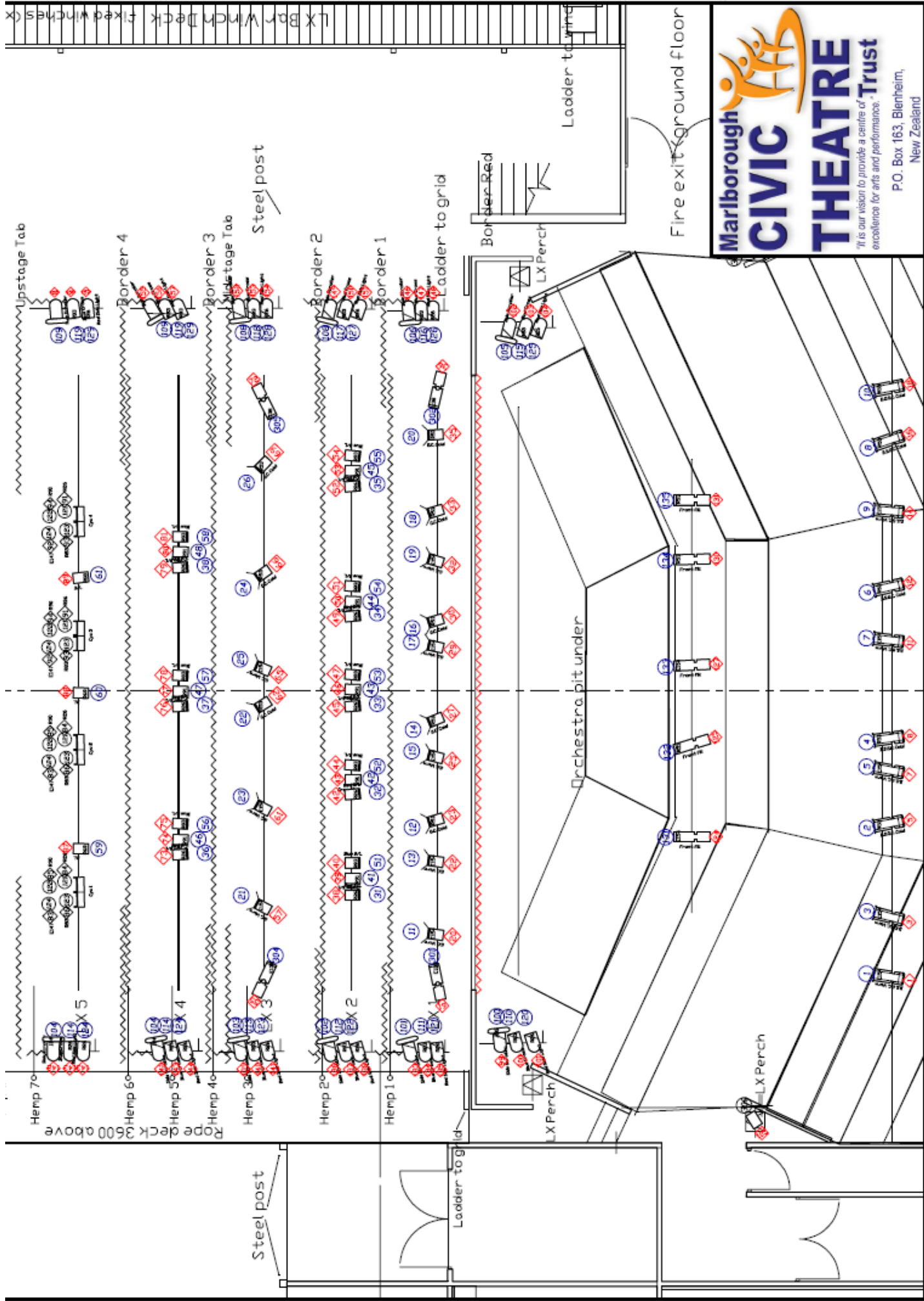
24 Channel Soundcraft Live 4 Mk II mixing desk	1
Sends to stage OP side	12
Vocal microphones (Shure SM58)	5
Instrument microphones (Shure SM57)	4
Direct Input boxes (single channel)	2
Direct Input boxes (double channel)	6
Denon DN-635 CD player	1
Marantz CDR510 CD player/recorder	1
Sony MDS-JE330 Minidisc Deck	1
Radio Lapel Microphones	24
Radio Hand Held Microphones (Shure SLX Beta 58A)	4

For a full list of equipment available please contact Operations Manager

## **Power Supply**

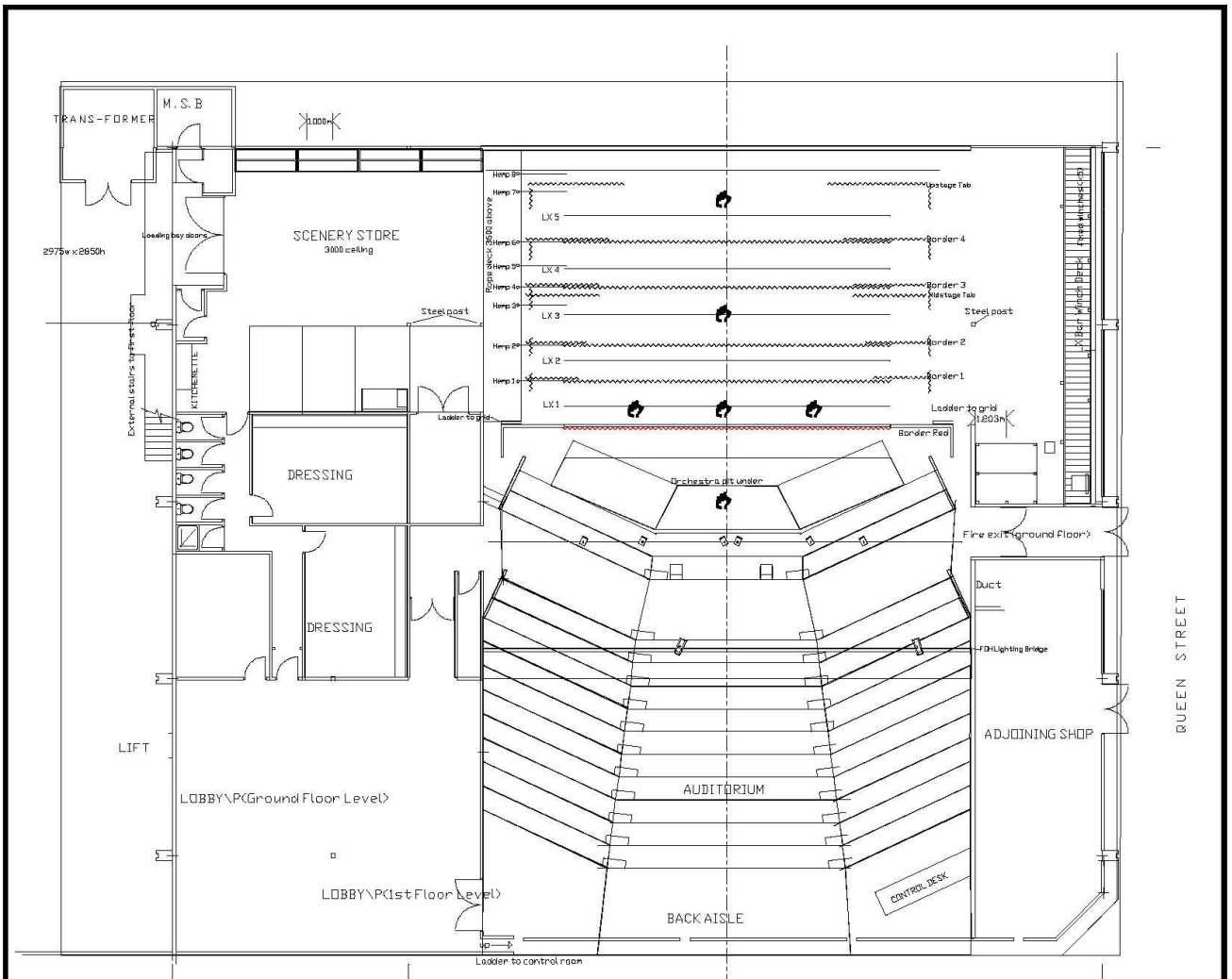
The Marlborough Civic Theatre has a 200amp supply.

12 X 32 Amp 3 Phase Outlets in control Rooms  
1 X 32 Amp 3 Phase Outlet in Grid (Down Stage Centre)  
4 X 32 Amp 3 Phase Outlet (Stage Left on the Pros)

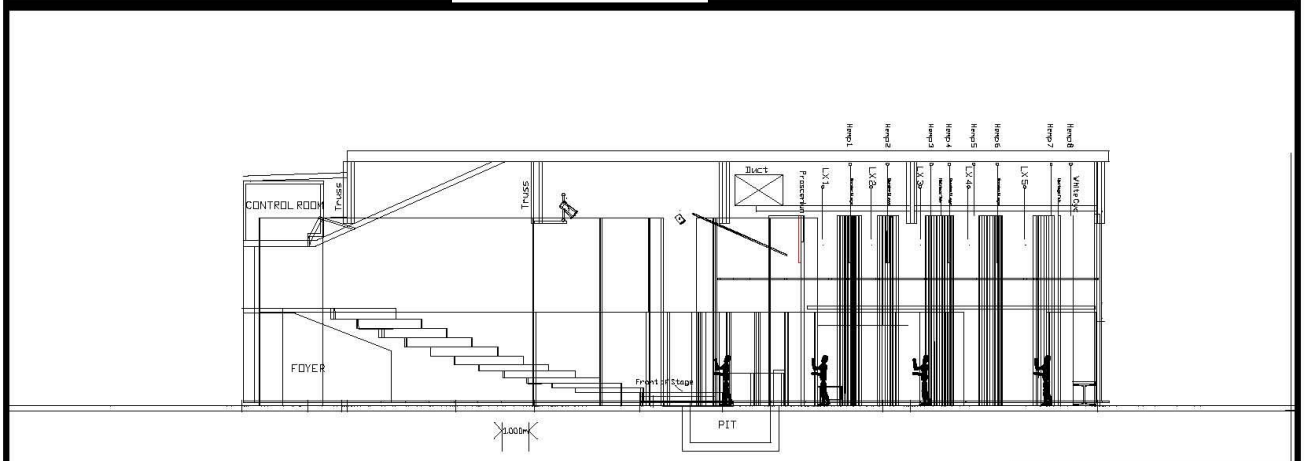


Marlborough  
**CIVIC**  
**THEATRE**  
 "It is our vision to provide a centre of Trust  
 excellence for arts and performance."  
 P.O. Box 163, Blenheim,  
 New Zealand

Standard rig Feb 2011



NOT TO SCALE




  
**Marlborough**  
**CIVIC**  
**THEATRE**  
**Trust**

*"It is our vision to provide a centre of excellence for arts and performance."*

P.O. Box 163, Blenheim,  
 New Zealand

# Seating Plan

Control Position



Stage